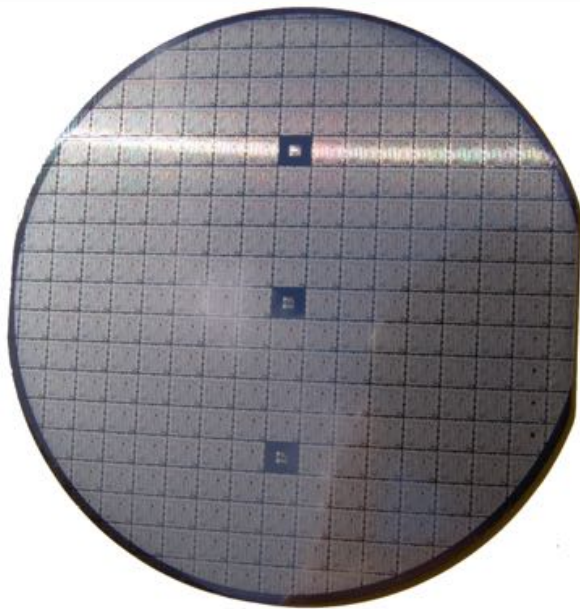


# It's time to rethink...

# GOTpop

## ...polygon operations



- Boolean Operations
- Sizing Operations
- Density Computation
- Automatic Window Optimization
- Flat or Hierarchical Computation
- Clipping
- Multi-file operations

XYALIS introduces GOTpop, a layout manipulation tool based on its latest **geometry-based signature** patent for blazing fast layout database operations.

GOTpop reliably and efficiently performs regular boolean operations, such as XOR, AND, OR, NOT, SUB, as well as sizing (both oversize and undersize).

GOTpop also computes density maps and exports them as image files, easy to integrate into documentation or automated scripts. It efficiently handles standard layout and job deck formats: GDSII, OASIS®, OASIS.MASK, MALY.

GOTpop can work in flat mode, usually used for mask files. It can also take advantage of hierarchical layouts to dramatically speed up computation and reduce memory footprint, making it for example the fastest tool on the market to perform undersizing on huge databases.

### SYSTEM REQUIREMENTS

Runs on any Linux workstation with RedHat 6 or above. Management of multi-core is automatic.

### INFORMATION

For more information on products or services please visit

[www.xyalis.com](http://www.xyalis.com)

or e-mail [sales@xyalis.com](mailto:sales@xyalis.com)

