

IC Layout finishing software

Mask Order Form Management System

DISTRIBUTION

XYALIS GTmodus is an enterprise wide mask data repository shared across roles, teams, and locations.

AUTOMATION

XYALIS GTmodus enforces Mask Data Preparation best practices through process management mechanisms.

SIMPLICITY

Access is done through intuitive web pages, customizable to comply with customers nomenclature.

SECURITY

XYALIS GTmodus leverages Oracle security and group mechanisms to protect access to photomask related data.

PORTABILITY

XYALIS GTmodus automatically generates SEMI-P10 compliant mask order forms for vendor independence.



- Enterprise wide photomask information repository
- Mask Data Preparation flow enforcement
- Correct by design Mask Order Form
- Intuitive web interface
- Security
- Essential companion toolbox

As the cost of a complete mask set has dramatically increased and now represents a significant part of the overall project cost, it is critical for design teams, mask data preparation teams, and mask shops to implement a robust and repeatable Mask Data Preparation flow, which increases the productivity of the mask set creation and removes any risk of error.

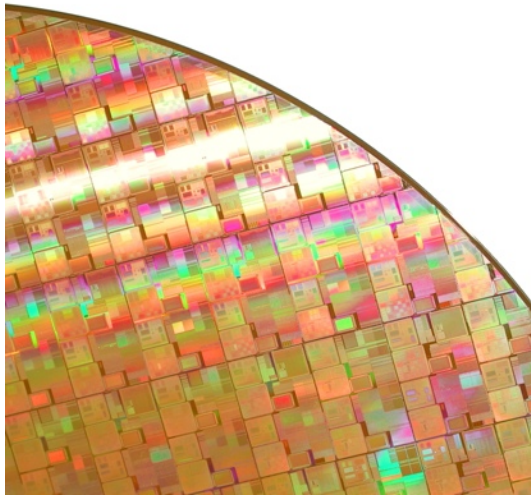
To keep cost down and avoid delays in production, ordering photomasks throughout the lifecycle of a chip must be an efficient and repeatable process independent of the changes in photomask vendors and chip manufacturers.

XYALIS GTmodus is an enterprise wide repository for all photomask related information, which makes mask ordering easy and safe.

Accessible to all design and Mask Data Preparation teams, XYALIS GTmodus ensures that correct data is timely and securely exchanged across all teams involved, including remote sites and contracting design centers, mask vendors, and fabs. XYALIS GTmodus helps Mask Data Preparation teams's choice of providers and enforces a robust and repeatable fully customizable Mask Data Preparation flow, resulting in a correct by design SEMI-P10 compliant Mask Order Form. Accessed through an intuitive and customizable web interface, XYALIS GTmodus is easy to deploy company wide.



Features and Benefits



ESSENTIAL COMPANION TOOLBOX

XYALIS offers a set of software dedicated to Mask Data Preparation (frame generation, multi-chip assembly, mask set creation) and a tool set dedicated to the manipulation and update of large layout databases that can process even the largest GDSII or OASIS files and provides a safe transfer to silicon for most complex SOC designs.

SYSTEM REQUIREMENTS

Software runs on any Linux workstation with RedHat 5 or above. Management of multi-cores or multi CPU is automatic. A MacOSX version is also available. Binaries for other platforms may be provided upon request.

INFORMATION

For more information on any of our products or services please visit us on the Web at: www.xyalis.com or mail to: sales@xyalis.com

- **Enterprise wide photomask information repository**
XYALIS GTmodus is an enterprise wide database regrouping all data related to photomask ordering and their relationships. Design teams track all mask requests for all of their projects. Mask Data Preparation teams take those mask requests, use the directory of mask vendors and fabs with their associated manufacturing and inspection equipment, as well as the list of standing contracts with supported providers to select the cheapest, fastest way of meeting the design team mask request.

- **Mask Data Preparation flow enforcement**
XYALIS GTmodus enforces that all steps of the Mask Data Preparation flow (data verification, frame generation, fracturing...) are performed without error before sending the data to the mask vendor, avoiding any subsequent problem. For each project XYALIS GTmodus tracks the progress of the flow. At each stage it executes fully customizable scripts, which perform all needed operations, and checks for error. No mask order form can be generated until all stages have been successfully passed.
- **Correct by design Mask Order Form**
Once all Mask Data Preparation tasks have been completed, the Mask Order Form is generated by the click of a button or an automated script. All information in the Mask Order Form is automatically extracted from the GTmodus database, ensuring correctness of data. The generated Mask Order Form follows the SEMI P10 standard.
- **Intuitive web interface**
All requests to the GTmodus database are performed through an intuitive web server. XYALIS GTmodus is accessible throughout the company from any web browser on any platform. XYALIS GTmodus web pages can be customized for easier deployment displaying company logos, or customized help tips to comply with the company nomenclature.
- **Security**
Based on Oracle, XYALIS GTmodus offers the highest security for accessing the database. Functionality is limited to the actual user needs (design engineer, Mask Data Preparation engineer) and data access is controlled by group mechanisms.



European Headquarters

World Trade Center
BP 1510
38025 Grenoble cedex 01
France
Phone +33 476 70 64 75

US office

14938 Camden Avenue
Suite 216
San Jose, CA 95124
USA
Phone +1 408 313 8433

XYALIS Asia

541 Orchard Road
#09-01 Liat Towers
Singapore 238881
Phone +65 6735 5523